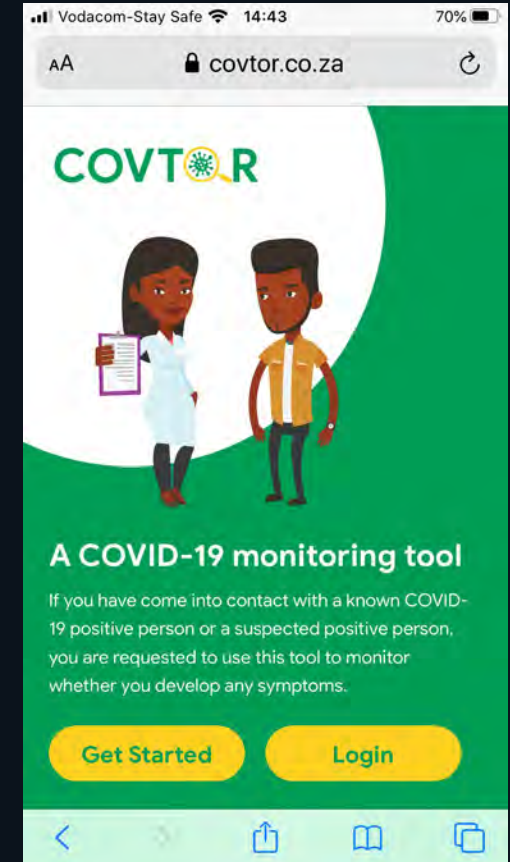


Covid-19: Plan on models, act on data and reality



PROF DARELLE VAN GREUNEN
Centre for Community Technologies
Port Elizabeth, SOUTH AFRICA

In the history of humanity, perhaps no data models have been more recognizable than COVID-19's infection and death curves.

Virtually everyone, from the farmer in India to the director of the Centre for Disease Control and Prevention (CDC) in the US, is now familiar with them.

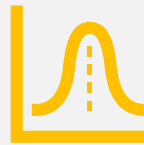
**Models are
best guess
estimates**



What we know



What we see



The reality

Whom to believe?

Well-established modellers that suggest we will have at least 40,000 deaths and about 1.2 million symptomatic cases by September 2020.

Others assert confidently that South Africa will not experience this level of Covid-19-related deaths, and that it is unlikely we will exceed 10,000 deaths as a result of this pandemic.

Scare tactic or means to change behaviour?



Rather than debating the accuracy of the model, we need to ask whether the model in use is good enough for the specific scenario.




In late April, the chair of the health minister's advisory committee sub-committee on public health referred to the early models used by the government as "back-of-the-envelope calculations", saying they were "flawed and illogical and made wild assumptions".





Information on the modelling was released much later, despite its apparently critical role.

**Remember the early
days of HIV epidemic?**



**Eastern Cape
&
Nelson Mandela Bay Realities**



STUNTING IN SA

What is our reality?

- Malnutrition and disease means COVID-19 could be more deadly in our region than elsewhere in the country.
 - Increase in recent weeks
- Co-morbidities
 - Obesity
 - Diabetes
 - Hypertension



Health Systems

- Are we feeding models with the accurate the number of cases, hospitalizations and deaths due to the coronavirus at a metro or provincial level?
- Do we have complete data or are we basing our assumptions on inaccurate data and false realities?





Behaviour produces data - feeds models – feeds predictions – creates false realities



**How will we know when
COVID-19 will peak?**





It really depends
It is in our hands – it is in your hands.





**Thank you - make your
actions count.**

